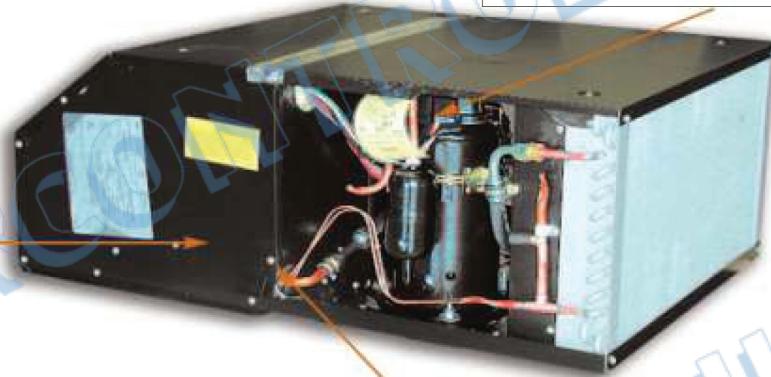




Motor is mounted directly to the bulkhead to prevent distortion of the angle of the blower wheel and to ensure a free turning action. This fixes the motor's position in relation to the blower.

Large evaporator and condenser coils with raised lance fins enhance the system's ability to dissipate heat.



Start kit with start capacitors and relays is standard equipment and makes starting easier under high temperature and humidity conditions.

Even through the toughest marine conditions, the 1700188 Air Conditioner's durability will last and last.

Turn your boat's cabin into a cool refuge from the heat of the day topside with a 1700188 Air conditioner. Built with protection against the added vibration and saltwater corrosion experienced on water, the 1700188 is an investment in quality you can rely on, season after season.

the 1700188 has a powerful 13,500 nominal BTU/h cooling capacity. It can be equipped with an elect-a-heat option that will take the chill off your cabin on cooler outings.

- All exposed sheet metal parts utilize a baked enamel finish for corrosion protection.
- Flexible refrigeration hoses provide the utmost shock protection.
- Operates from a generator or 110-volt shore power.
- The fan motor is totally enclosed in an epoxy-coated housing and features a stainless steel shaft for optimum corrosion protection.
- MagnaGard screws are chemically treated to resist corrosion.
- Plastic drain pan eliminates further corrosion.
- Raised lance fins on the coils increase the turbulence for heat transfer, enhancing the efficiency of the cooling process.
- The top and bottom of the compressor are secured to the air conditioner chassis, reducing the potential for damage to the system when used in high stress applications.
- Start kit with start capacitors and relays is provided as standard equipment to make starting easier under high temperature and humidity conditions.

Cooling capacity	13,500 BTU/h
Amps cooling	15,5 A
Amps heating	16 A
Locked rotor cooling amps	63 A
Electrical rating	115 V 60 Hz 1Phase
Unit weight	91 Lbs

P/N: 1700188

